

Recycling centres

Residents of Bolzano can take the following materials to the recycling centre in Via Mitterhofer (near the Avanti furniture shop) free of charge:

YES

Drink cartons, milk cartons (Tetrapak)

Glass, tins and jars

Paper and cardboard

Plastic packaging

Bulky waste materials

Hazardous waste

Debris from household repairs/DIY improvements (bricks, bathroom fixtures etc.)

Cutlery and ceramics

Unwanted electrical and electronic equipment

Tyres

Large polystyrene objects



ambiente
umwelt

SEAB S.p.A.
Via Lancia 4/A
39100 Bolzano
Freephone number: 800 013 066
Tel.: 0471 541 700 - Fax: 0471 541 767
info@seab.bz.it - www.seab.bz.it

Garden waste

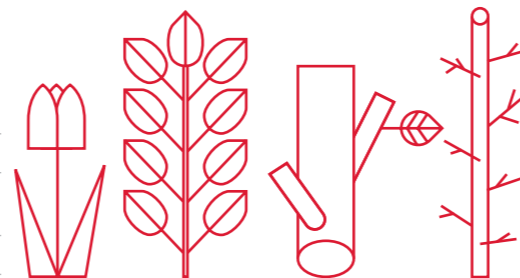
YES

Organic garden waste

Cuttings from flowers, flower beds, hedges, bushes

Grass cuttings

Shrubbery, branches and wood shavings



The garden waste **collection service** is free and should be booked by calling the following freephone number: 800 013 066. Garden waste can also be taken to the **garden waste collection centre** in Via Volta, right after Resia bridge, free of charge.



Hazardous waste

Recycling centre, mobile hazardous waste collection service



YES

Batteries

Containers for chemical substances with the hazardous waste symbol printed on them

Fertilisers and insecticides

Neon lights and fluorescent tubes

Mineral and vegetable oil

Paint, cement

Syringes and solvents

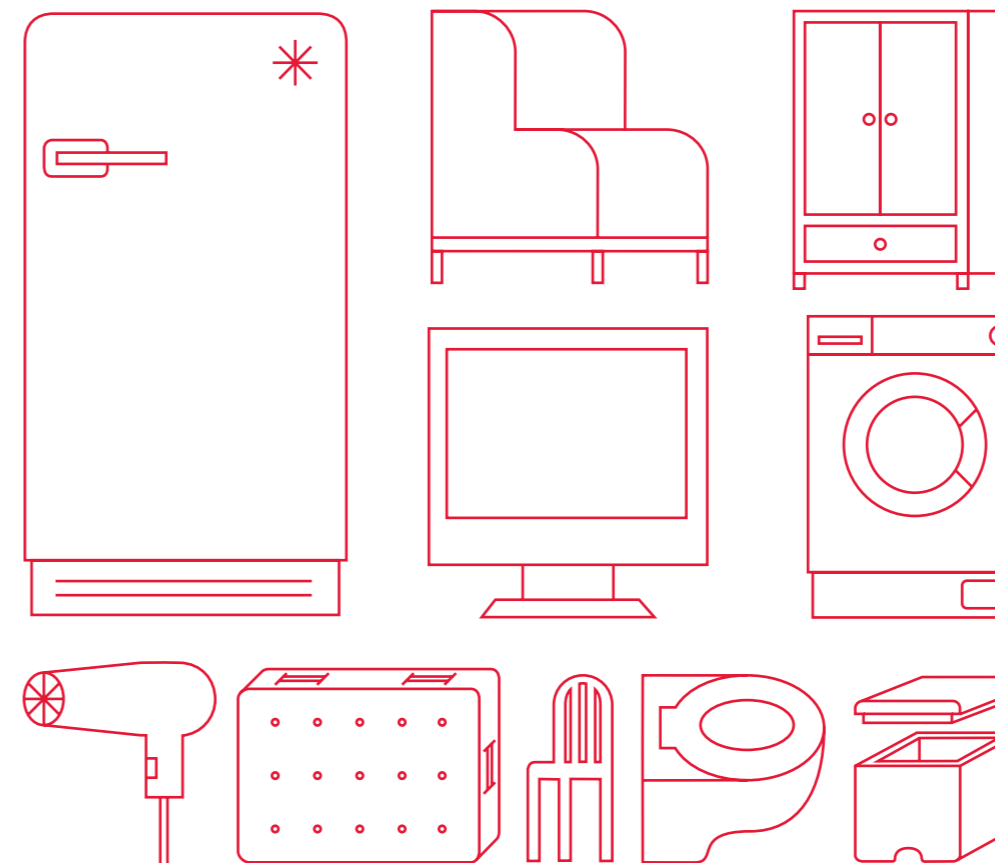
Medicines past their expiry date

The hazardous waste **mobile collection** service's timetable can be downloaded from the www.seab.bz.it website or picked up from Bolzano borough council's civic centres or SEAB's offices in 4A Via Lancia.

N.B. **Medicines past their expiry date** can also be taken to any chemist's. **Used batteries** can also be taken to tobacconists and domestic appliance retailers that have the special clear plastic cylinders for collecting them.

Bulky waste, electrical and electronic waste

Recycling centre, bulky waste material collection service



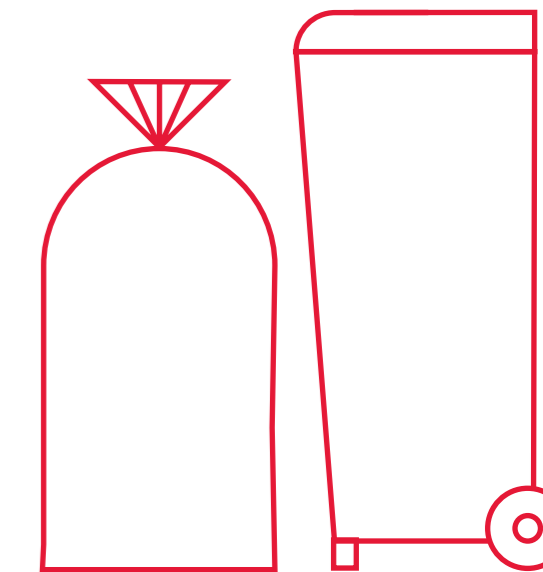
YES

Mattresses, armchairs, furniture, washing machines, computers, large toys, ironing boards etc.

The bulky waste and large domestic appliance **collection service** costs €15 and must be booked in advance by calling the **freephone number 800 013 066** (maximum: three objects). This service is free to households that consist entirely of people over 65 years of age.

Together, we can make a difference

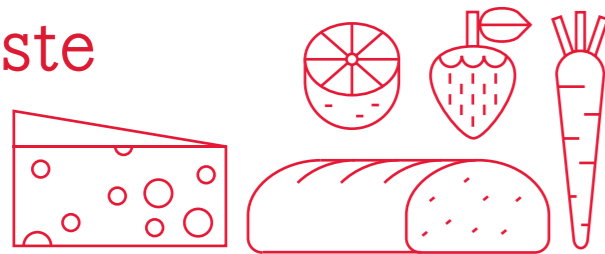
Managing household waste is an important part of **environmental protection strategy**. Each and every one of us can do our bit by always sorting our household waste and, even before that, by producing as little waste as possible. This leaflet aims to be a **practical guide** that can help clarify any doubts you may have on how to sort rubbish in the right way. It contains **useful information and advice** on how to sort household waste properly.



ambiente
umwelt

INGLESE/ENGLISH

Organic waste



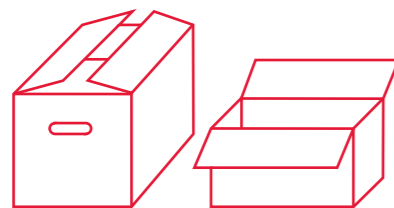
| YES | NO |
|--|---|
| Raw and cooked scraps of fruit, vegetables, fish, meat, pasta, rice and bread | Bones, mollusc shells, egg shells |
| Coffee grounds, tea bags | Beverages |
| Paper napkins, kitchen towel | Cat litter/pet bedding, nappies |
| Small quantities of cut flowers (otherwise throw them in the blue container for garden cuttings) | Metal, plastic or glass packaging and objects |
| Unpackaged foods past their sell-by date | Plastic bags and bioplastics |

You will need an **organic basket** with specially designed **paper bags** for collecting organic waste. These will be delivered to you when you hand in your application for the waste fee in our offices, located in 4/A Via Lancia.

You may **only** use the paper bags **supplied by SEAB** or the paper bags (just paper, though!) used to carry bread and fruit etc. When a bag is full, seal it by rolling or folding the top, before throwing it in your apartment block's brown-coloured bin for organic waste.



Cardboard



| YES | NO |
|------------------------------|-------------------------------|
| Cardboard boxes | Food boxes (pasta, rice etc.) |
| Corrugated packing cardboard | Egg cartons |
| | Tape or labels |
| | Polystyrene |

Fold cardboard boxes **and remove any tape or labels.**



Plastic packaging

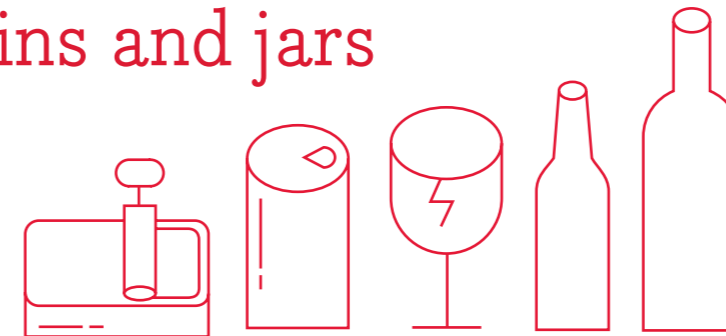


| YES | NO |
|---|---|
| Plastic bottles for liquids | Plastic crates |
| Shampoo bottles and detergent bottles | Plastic picnicware (plates, glasses and cutlery) |
| Cream/sauce dispensers/bottles | Plastic basins, plant pots |
| Plastic bags | CDs, small toys |
| Clear plastic containers for food (fruit, cold cuts etc.) | Bulky polystyrene packaging (such as the type used to wrap domestic appliances) |
| Polystyrene containers and egg boxes | Plastic cooking utensils, bowls and jars |
| Yoghurt pots and dessert pots in general | Pens, rulers |
| Bubble wrap and plastic packaging wrap | Tubes and containers with food residues or other substances (mayonnaise, toothpaste, creams etc.) |

You must empty, **rinse and crush** plastic containers before throwing them in the waste bin.



Glass, tins and jars

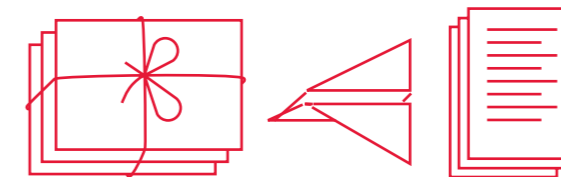


| YES | NO |
|---|------------------------------|
| Glass bottles and containers | Window panes |
| Vases, jars and glasses | Ceramic or porcelain objects |
| Aluminium cans | Mirrors |
| Metal lids and screw tops | Dirty or full containers |
| Aluminium foil and aluminium containers | |
| Small metal containers | |

You must **empty and rinse** glass and metal containers before throwing them in the waste bin.



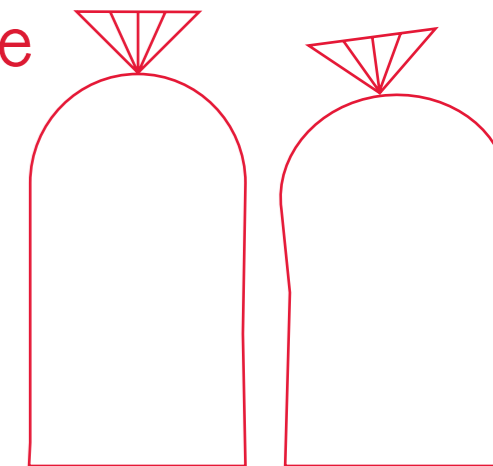
Paper



| YES | NO |
|---|--|
| Books, newspapers, notebooks and magazines | Laminated paper |
| Catalogues and leaflets | Thermal paper (faxes and shop receipts) |
| Phone books | Paper napkins and tissues |
| Office letters and papers (photocopies, printed materials etc.) | Tetrapak and similar objects (composite materials) |
| Paper bags | |
| Food containers (pasta, rice, etc.) | |
| Egg cartons | |



Non-recyclable waste



Residents in detached houses have their own personal bin (one per household) for all remaining household waste. Residents in apartment blocks share the building's bin, equipped with lock and key, with other residents of the same block. Residents in the old city centre use individually assigned plastic bags fitted with a microchip.

Rubbish is collected once a week. Rubbish bags in the old town centre are collected three times a week. Rubbish collection days and times vary according to the district and can be consulted at the following link: www.seab.bz.it/it/clienti-privati/rifiuti-residui

Bins should be placed at the proper collection points, indicated with yellow lines, by the specified time. Should there be no sign of such areas, bins or microchipped bags should be left on the kerb in an orderly fashion that is clearly visible.

Non-recyclable waste is anything that cannot be thrown in the recycling bins or taken to a recycling centre, such as:

| YES |
|---|
| Wax paper, laminated paper |
| Nappies and sanitary towels |
| Vacuum cleaner bags |
| Small plastic objects, ornaments, toys, CDs |
| Cat litter and pet bedding |
| Tetrapak and other composite materials |

